



A Touchstone Energy® Cooperative 

1511 14,000 Road, P.O. Box 368, Altamont, KS 67330
866-784-5500
www.twinvalleyelectric.coop

TWIN VALLEY ELECTRIC CO-OP

NEWS

TWIN VALLEY ELECTRIC COOPERATIVE, INC.

BOARD OF DIRECTORS

Bryan Coover
President

Jason Zwahlen
Vice President

Bryan Huckle
Secretary

Dareld Nelson
Treasurer

J J Bebb
Director

Zach Foster
Director

Jason Martin
Director

Diane McCartney
Director

Heath Steeby
Director

STAFF

Angie Erickson
CEO

OFFICE HOURS

Monday-Friday
8 a.m. to 4:30 p.m.

CONTACT US

1511 14,000 Road
P.O. Box 368
Altamont, KS 67330
866-784-5500
www.twinvalleyelectric.coop

FROM THE CEO

Working Together to Lower Demand

When outdoor temperatures drop, electricity use naturally rises. Colder weather drives us indoors, where we rely more heavily on home heating systems, more lighting and household appliances. Heating systems run longer and more frequently to maintain comfortable indoor temperatures. Combine that with the fact that most people use electricity at the same times — typically in the mornings and early evenings — and the result is significant pressure on our electric grid.

Twin Valley Electric Cooperative works closely with Kansas Electric Power Cooperative (KEPCo), our local generation and transmission (G&T) cooperative, to plan for these seasonal weather patterns and changes and ensure you have reliable power every

day of the year. This partnership involves detailed resource and infrastructure planning to make certain electricity is available whenever you need it. However, it's important to remember that our local system is part of a much larger regional and national electric grid.

During the winter months, when homes and businesses across the country are using more electricity simultaneously, overall demand can approach — or occasionally exceed — available supply. This is especially true



Angie Erickson

Continued on page 12B ►

INTERESTED IN SERVING ON THE BOARD OF TRUSTEES?



Twin Valley is beginning the search for board of trustee candidates this January. Board members represent the interests of the members in directing the business and affairs of the cooperative. They establish the strategic direction for the cooperative based on their members' interests, needs and desires.

If you are interested in serving the cooperative on the board, please contact memberservices@twinvalleyelectric.com or call our office at 866-784-5500 for information.

Working Together to Lower Demand Continued from page 12A ►

during severe weather events, such as ice storms, sudden temperature drops, or equipment malfunctions that reduce generation capacity. In rare cases when demand threatens to outpace supply, the regional grid operator, Southwest Power Pool, may call for temporary, controlled outages — often referred to as rolling blackouts — to prevent broader system failures. If such a situation arises, Twin Valley will provide timely updates and information to members through Facebook, as well as our website.

To prepare for these scenarios and minimize risks, Twin Valley and our G&T partner take proactive measures to strengthen reliability year-round. These include routine system maintenance, investments in grid modernization and comprehensive disaster response planning. These proactive steps are designed to ensure our portion of the grid remains resilient even under extreme conditions. Yet, maintaining a reliable electric system requires a collective effort — and every member plays an important role in lowering demand when the grid is under stress.

You can help by taking simple actions during periods of high electricity use, especially on the coldest days of winter:

- 1 LOWER YOUR THERMOSTAT SLIGHTLY.** Even reducing the temperature by a few degrees can help.
- 2 DELAY USING LARGE APPLIANCES DURING PEAK HOURS, WHICH ARE 3-6 P.M.** Run dishwashers, washing machines and dryers during off-peak hours — typically midday or late evening.

“By practicing simple energy conservation habits at home, you not only save money on your monthly bill — you also help strengthen the resilience of the grid that powers our community.”

3 ADJUST YOUR WATER HEATER. Setting it to 120 degrees and spacing out showers helps conserve both energy and hot water.

4 UNPLUG UNNECESSARY DEVICES. Power used for lighting and electronics adds up and accounts for a significant portion of home energy use. Disconnect unused items to reduce energy waste.

Understanding how winter weather impacts electricity demand is key to maintaining system reliability. By practicing simple energy conservation habits at home, you not only save money on your monthly bill — you also help strengthen the resilience of the grid that powers our community. Together, through small actions and shared awareness, we can ensure that our homes remain warm, our lights stay on, and our local grid continues to serve us reliably throughout the season.

LIEAP Benefits — Do You Qualify?

Application period opens this month

The Low Income Energy Assistance Program (LIEAP) is a federally funded program that helps keep families safe and healthy by assisting eligible households with a portion of their home energy costs by providing a once per year benefit.

LIEAP applications must be received online or in a Kansas Department for Children and Families (DCF) office between Jan. 20, 2026, beginning at 8 a.m. and March 31, 2026, by 5 p.m. to be considered for eligibility.

Benefit levels vary according to household income, number of persons living at the address, type of dwelling, and type of heating fuel. To qualify, applicants must meet the following requirements:

- An adult living at the address must be personally responsible for paying the heating costs incurred at the current residence, payable either to the landlord or the fuel vendor.

2026 INCOME ELIGIBILITY GUIDELINES

Persons Living at Address	Maximum Gross Monthly Income	Persons Living at Address	Maximum Gross Monthly Income
1	\$1,956	5	\$4,706
2	\$2,644	6	\$5,394
3	\$3,331	7	\$6,081
4	\$4,019	8	\$6,769
+1	\$688 for each additional person		

- The combined gross income (before deductions) of all persons living at the address may not exceed 150% of the federal poverty level according to the guidelines listed above. For more information about the application process or to apply visit www.dcf.ks.gov.

Cold Weather Rule

The Kansas Corporation Commission's (KCC) Cold Weather Rule restricts residential electric disconnects from Nov. 1 through March 31 when temperature forecasts are below 35 degrees, as long as the consumer contacts the utility and makes alternate arrangements to pay their balance.

Electric cooperatives are not required to follow the KCC policy, and are responsible for establishing their own seasonal rules. Twin Valley Electric's Cold Weather Rule is nearly identical to KCC's rule.

Under the rules of both organizations, individuals who are unable to pay their bill and would like protection under the Cold Weather Rule must call Twin Valley's office at 866-784-5500 to make a payment arrangement. To remain protected by the Cold Weather Rule, the



The Cold Weather Rule helps existing consumer-members maintain electric services during the winter.

individual must follow through with the arrangement agreed upon by both parties.

If you want more information about our Cold Weather Rule, or if you have questions about billing and payment options, please call our office at 866-784-5500.

POWER UNDER PRESSURE

Four Ways to Ease Grid Strain This Winter

Energy use spikes during periods of extremely cold weather, which adds strain to the electric grid. When our community works together to reduce energy use, we can make a big impact in supporting reliability.

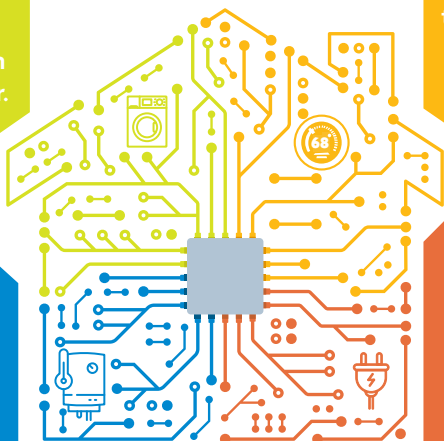
Here are four simple ways you can help:

Delay using large appliances. Run them in the evenings or midday when demand is lower.

Lower your water heater to 120 degrees and avoid back-to-back showers.

Lower your thermostat. Even a difference of a few degrees can help.

Unplug unnecessary devices. Electronics and lighting add up. Unplug any unused items.



SOURCE: NATIONAL RURAL ELECTRIC COOPERATIVE ASSOCIATION

HEATING SAFETY TIPS FOR WINTER



Simple precautions can help you avoid FIRE HAZARDS and ELECTRICAL DANGERS.

There is nothing like curling up by the fire on a cold winter day. But heating equipment is one of the leading causes of home fire deaths. With a few simple steps, you can prevent most heating fires from happening.

STAY COZY AND SAFE THIS WINTER:

- ▶ Maintain a 3-foot zone around heating equipment like furnaces, radiators, fireplaces, electric or wood stoves and space heaters where no items, kids or pets enter.
- ▶ Plug heaters and electric fireplaces directly into wall outlets and only one appliance into an electrical outlet at a time.
- ▶ Turn off and unplug portable heaters when leaving the room or going to bed.
- ▶ Never use your oven to heat your home.
- ▶ Test smoke alarms every month.
- ▶ Hire a qualified professional to install or service stationary heating equipment and water heaters.
- ▶ Have your heating system, vents and chimneys cleaned and inspected every year by a qualified professional.

SMART TIPS

- ▶ Install and test smoke and carbon monoxide alarms to alert you before it's too late.
- ▶ Create your home fire escape plan and practice it with your family.

SOURCE: WWW.SAFEELECTRICITY.ORG

Attention High School Juniors

Twin Valley Electric Cooperative, Inc. will send one high school junior to the Electric Cooperative Youth Leadership Camp in Steamboat Springs, Colorado, and one high school junior to the Electric Cooperative Youth Tour in Washington, D.C. To find out more, contact Marsha Moses at 866-784-5500.

TO QUALIFY

Applicants must be a high school junior living within the cooperative's Twin Valley territorial boundaries.

TO APPLY

To apply, complete, sign and return application below by mail, deliver to Twin Valley Electric, 1511 14000 Road, PO Box 368, Altamont, KS 67330

BY JAN. 31. Or apply online at www.twinvalleyelectric.coop.

SELECTION PROCESS

Applicants will study information about electric co-ops provided by Twin Valley and take a quiz. There will also be a **SHORT INTERVIEW** after testing.



Applicant Name _____

Phone _____ Email _____

Address _____ City _____ State _____ Zip _____

Date of Birth _____ School _____

Parent(s)/Guardian(s) Names _____

Parent(s)/Guardian(s) Phone _____ Twin Valley Account Number _____

I agree that all information supplied in this application is accurate and true.

APPLICANT SIGNATURE

I hereby grant permission for _____ to enter the 2026 Youth Tour competition sponsored by Twin Valley Electric Cooperative.

SIGNATURE OF PARENT/LEGAL GUARDIAN

The safety of our students and chaperones is our top priority. If the Electric Cooperative Youth Tour or Cooperative Youth Leadership Camp organizers believe that travel is unsafe due to concerns with the coronavirus (or any other acts of terrorism, disaster, civil disorder, or curtailment of transportation facilities), the trip will be canceled.