



A Touchstone Energy® Cooperative 

501 S. Huston Ave, P.O. Box 368, Altamont, KS 67330
866-784-5500
www.twinvalleyelectric.coop

TWIN VALLEY ELECTRIC COOPERATIVE

NEWS

Twin Valley Electric Cooperative, Inc.

Ron Holsteen General Manager

Board of Trustees

Daniel Peterson

President

Bryan Coover

Vice President

Ronald McNickle

Secretary

Larry Hubbell

Treasurer

Michael Allison

Trustee

Tom Ellison

Trustee

Bryan Hucke

Trustee

Wayne Revell

Trustee

Robert Webster, Jr.

Trustee

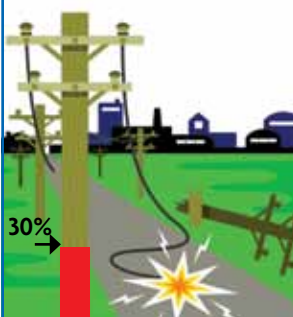
Office Hours

Monday-Friday

8 a.m. to 4:30 p.m.

FEMA Rebuild Update

As of May 20, we have completed 30% of Federal Emergency Management Agency (FEMA) rebuild work.



FROM THE MANAGER

Legislative Update

Annually the National Rural Electric Cooperative Association (NRECA) coordinates a Legislative Conference in Washington, D.C., during the first week of May.

This year I joined 30 other rural electric leaders from Kansas at this conference. In all, there were over 2,500 directors, managers and employees of electric cooperatives from 47 states in attendance.

The first day of the conference consisted of several workshops and briefings designed to update and educate us on the status of the most important issues being considered by Congress that have an impact on our rural electric cooperatives.

High on NRECA's to-do list was to persuade members of Congress to co-sponsor legislation that blocks or delays the Environmental Protection Agency from regulating greenhouse gases from stationary sources under the Clean Air Act. That regulation, which is proceeding as Congress remains deadlocked on legislation to address carbon emissions, poses a threat to the rural quality of life because it will drive up electric bills. NRECA CEO Glenn English called the act the "wrong tool for the job."

Other issues at the conference included support for the Rural Utilities Service, legislation to expand co-

operatives role in energy efficiency, and an emphasis on informing elected officials and staffers about the unique role of co-ops.

"This is not about fuel. This is not even about climate change," said English as he wrapped up the first day's briefings. "This is about trying to make certain that those 42 million people served by electric cooperatives are going to continue to have affordable electric power and that their quality of life is going to be maintained and improved, as we go forward."

Our Kansas delegation spent the rest of our time on Capitol Hill meeting with our elected officials and their staffs. It was encouraging to learn that every member of the Kansas Congressional delegation has signed on to legislation to impose a two-year hiatus on federal regulation of greenhouse gases from stationary sources.

As Congress moves forward on climate change, it will be crucial that you, our members, make your voice heard by contacting your Senators and Representative asking them to make sure the result is legislation that both rural electric cooperatives and our members can live with.



Ron Holsteen

NOTES FROM OPERATIONS

Tree Trimming Can Save You Money



William Worthy

“At Twin Valley, we will keep that air conditioner running as long as your tree will let us.”

Trees, beautiful to look at, shade on a hot day, and nothing enhances the flavor of beef like a good seasoned hardwood. They can also wreak havoc on your electric cooperative's system.

At Twin Valley, system reliability is a high priority, and tree trimming is part of the maintenance that we need to routinely perform. After the unusually wet winter season, the fields around our service territory are green and lush; this means the trees are healthy as well.

Balancing keeping costs down, while providing dependable electric service is something we will continue to wrestle with. We want to protect your trees, but keeping the lights on might hinder that protection.

Trees also drive up costs due to line loss. Every time a tree hits an energized 7,620 volt line, an arc is made. This arc makes the meter in the substation turn. In a nutshell, Twin Valley is getting charged by our generation and transmission provider for electric use (the arc I mentioned) and the cooperative cannot bill the usage. This is line loss, and these costs will be passed on to you.

If you have a tree, on or near our line, call us. We will schedule a crew to come out and clear it so it can safely be removed. Due to time and costs, we will not remove the entire tree, but we will make it safe for you to do so.

When you call, please remove any hazards or property that may be damaged due to falling limbs. We will leave the limbs for you to dispose of. Remember, these are **your** trees that may be causing you and your neighbor problems with your electric service.

Keeping you cool on a warm day is a great service a tree provides, keeping you cool on a hot day is something your air conditioning provides. At Twin Valley, we will keep that air conditioner running as long as your tree will let us.

Watch Out for Electrical Hazards on the Farm

Those who live on a farm know that not only is it hard work, but it can be dangerous, too. Each year, farmers are electrocuted when large farm machinery comes into contact with overhead power lines.

Often, the situation occurs because a newer, bigger piece of equipment no longer clears a line the way a smaller one did. In addition, shifting soil may also affect whether or not machinery avoids power lines from year to year.

The following tips will help keep everyone on a farm safe:

- ▶ Look over work areas carefully for overhead power lines and utility poles.
- ▶ Make sure you have ample clearance when moving large machinery such as combines, grain augers, pickers, balers, and front-end loaders. Do this every year as equipment sizes or soil conditions may change.
- ▶ Store large equipment properly if near or under power lines. When planning new construction, factor in existing power lines.
- ▶ Be careful when working around trees and brush; they often make it difficult to see power lines.
- ▶ Train all farm workers to keep an eye out for overhead power lines.

Go Paperless Today!

Whether you're busy taking care of your family, or just always on the go, we know how hard it is to get everything done in 24 hours. That's why Twin Valley Electric is proud to offer online bill pay.

You have the ability to pay your bills online, view your account history and your statements with our Online Bill Pay system. Just visit our Web site at www.twinvalleyelectric.coop and click the Online Bill Pay icon. You'll be directed to our secure site. Once there you will need to create a user ID, the first time you log on. You can then view and pay your bill online. It's really that easy.

Our Online Bill Pay system is secure and designed to protect your account and payment information. Payment methods include personal check, or use your Visa or MasterCard card.

The screenshot shows the Twin Valley Electric Cooperative website. At the top, there's a navigation menu with links for Home, About Us, Energy Savings, Safety, News & Info, Member Tools, and Careers. Below the navigation, there's a section for "Your Energy Account" with a "BillPay" button and a "VISA" logo. To the right, there are two main sections: "HOME" with a photo of a family and a dog, and "BUSINESS" with a photo of a farm. Below these, there are links for "Residential Service Apply for Service Budget Billing EFT Sign-Up" and "Apply for Service". At the bottom, there's a "WILDBLUE" logo and a message: "Tired of waiting for bills-out? WildBlue may be just what you need."