

TWIN VALLEY ELECTRIC COOPERATIVE NEWS



Twin Valley Electric Cooperative, Inc.

Ron Holsteen General Manager

Board of Trustees

Daniel Peterson
President

Bryan Coover
Vice President

Ronald McNickle
Secretary

Larry Hubbell
Treasurer

Michael Allison
Trustee

Tom Ellison
Trustee

Bryan Hucke
Trustee

Wayne Revell
Trustee

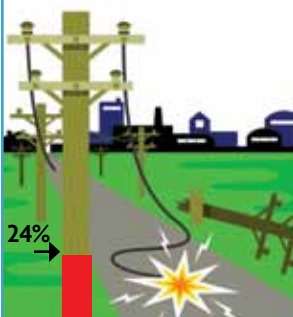
Robert Webster, Jr.
Trustee

Office Hours

Monday-Friday
8 a.m. to 4:30 p.m.

FEMA Rebuild Update

As of April 16, we have completed 24% of Federal Emergency Management Agency (FEMA) rebuild work.



FROM THE MANAGER

Annual Meeting Review

Twin Valley Electric Cooperative held its 63rd Annual Meeting on Thursday, April 15.

This year, we served a meal prior to the meeting, hoping to attract more participation. We were pleased to have over 100 members register for the meeting.

Congratulations to Bryan Hucke, Dan Peterson and David Hubbell on their re-election to the Board of Directors for another three-year term.

Dan Peterson, Board President, reported that the Board has given a lot of attention to updating all of the cooperative's policies this past year. He noted that the Board is committed to lineman training activities and has put a scholarship program in place to assist local students who will be attending lineman training schools.

Peterson said one of most important Board activities to date is the establishment of a committee to look into the feasibility of constructing a new headquarters facility. As Twin Valley has continued to grow and change to meet the needs of a changing industry, it has become very apparent that our 1947 building is inadequate and obsolete. The building committee has visited several headquarters buildings of cooperatives similar in size and demographics as Twin Valley and are in the process of conducting an extensive study to determine size, location, type of construction, etc., which would best fit our needs.

David Hubbell, Treasurer, reported that Twin Valley had another good year financially. Assets of the cooperative have grown by 28 percent and the total margins for 2009 were \$417,116. The

cooperative returned \$91,112 of the allocated capital credits to the members in 2009.

Mark Doljac from Kansas Electric Power Cooperative (KEPCo), updated the members on power supply issues and noted that everyone needs to be concerned about legislative and environmental regulations being considered by Congress and the Environmental Protection Agency. Most of these issues could significantly increase future energy costs. We are very fortunate that over 50 percent of our power supply comes from non-carbon sources—nuclear power and hydropower.

Dave Holthaus, Kansas Electric Cooperatives, Inc., reported that the state legislature is considering repealing the exemption for the state sales tax on electricity. There is also a bill that would allow the State to delay reimbursing the cooperatives for the State's share of our Federal Emergency Management Agency (FEMA) rebuild project. The state's share of Twin Valley's FEMA rebuild project is about \$570,000.

I discussed the work completed during the past year to provide our members with a more reliable source of electric power.

We are continuing to upgrade our computer technology and have completed a sectionalizing study that will allow us to restore outages in a more efficient manner.

I hope that those members who attended the Annual Meeting found it to be informative and encourage each of you to consider attending our meeting next year.



Ron Holsteen

2010 Twin Valley Annual Meeting Highlights



1—Twin Valley linemen proudly display the flag in front of Labette County High School. 2—106 members registered for the Annual Meeting. 3—The Labette County High choir provided dinner entertainment for guests. 4—Tricia Cares shares memories from her experience on the “Government in Action” Youth Tour in 2009. 5—Twin Valley employees serve members a chicken dinner from Pichler’s Chicken Annie’s. 6—Board Directors re-elected were (from left) David Hubbell, Bryan Hucke and Dan Peterson.

Twin Valley Electric Cooperative held its Annual Meeting April 15 at the Labette County High School Cafeteria in Altamont.

Supper was catered in by Pichler’s Chicken Annie’s of Pittsburg with the employees serving. There were 106 registered members in attendance along with youth tour winners, employees and guests.

Leon Pearce was the winner of the \$200 cash prize that was given away for the Early Bird Drawing. The election of Directors was held and the following Directors were re-elected to another three-year term: District 1, Bryan Hucke, Parsons; District 2, Dan Peterson, Altamont and District 3, Larry “David” Hubbell, Chetopa.

Reports were presented by the President, Treasurer and General Manager.

The members heard from Tricia Cares, 2009 Youth Tour Trip winner, on her experiences on the “Government in Action” Youth Tour to Washington, D.C.

Mark Doljac, Director of Rates and Regulation, KEPCo, and Dave Holthaus, Director of Government Relations, KEC, gave short reports on wholesale power supply and legislative issues.

Paul “Buddy” Souders, Journeyman Lineman, was recognized for 25 years of service; Reynold Smith, Line Clearance, was recognized for 20 years of service; Scott Gegg, Journeyman Lineman, was recognized for 10 years of service; Dustin Acuff, Journeyman Lineman, was recognized for five years of service and Rebecca Hanigan, Director of Finance, was recognized for her five years of service.

Service awards were also given to Board members: Bryan Coover, Vice President, for 10 years; Ronald McNickle, Secretary, for 10 years; Robert Webster, Director, for 10 years and Mike Allison, Director, for five years.

The meeting was then adjourned and numerous door prizes were distributed.

NOTES FROM OPERATIONS

2010 Operations Goals: Reliability and Safety



William Worthy

I look forward to serving the membership of Twin Valley.

I would like first of all, to thank everyone who welcomed me at Twin Valley Electric Cooperative's Annual Meeting, it was great to meet all of you.

My name is William Worthy and I am the new Director of Operations for Twin Valley. I bring 25 years of experience in the cooperative world and I am excited about the opportunity to serve the members of Twin Valley.

I began my career as a groundsman on a line construction crew and worked my way through an apprenticeship program to journeyman lineman. Through training, hard work, and determination I became one of the youngest Operations Managers in Texas.

I left the cooperative world for a brief stint with an engineering firm in Corpus Christi, TX. I oversaw designers and engineers working for investor-owned utilities, municipalities, and cooperatives. I also helped manage the deployment of over 200 men and women into the city of Houston for damage assessment of the electric utility following the devastation of Hurricane Ike.

Safety of the employees of Twin Valley is my number one priority. System reliability is a close second. We will work hard to provide the best electric service around, but no employee will be asked to endanger themselves to restore power. It may take a few more minutes to acquire the needed equipment, but you can rest assured we will respond and restore your power, safely and efficiently.

Cutting overhead costs will be something I hope to do, as well. Doing due diligence researching equipment, training of employees, and finding other ways to save the cooperative money is also high on my priority list.

I look forward to serving the membership of Twin Valley. If you see me out, don't hesitate to introduce yourself to me. I look forward to getting to know all of the cooperative membership.

Journot & Nelson Win Trips of a Lifetime!

Twin Valley has selected two youth to attend trips of a lifetime!

CALEB JOURNOT, Parsons, will attend the "Government in Action" Youth Tour in Washington, D.C. **JENNIFER NELSON**, Edna, will travel to Steamboat Springs, CO, for Cooperative Youth Leadership Camp in July.

Applicants for the youth trip compete in their knowledge of electric cooperatives, as well as completing a personal interview with a panel of judges.

Caleb will start his trip with a tour of the Kansas State Capitol and the Wolf Creek Power Plant. He then heads to Washington, D.C., where he will visit many of the historical sites, as well as meeting with elected officials on Capitol Hill. Caleb will join over 1,500 other youth from around the country to learn more about the U.S. government and how it functions.

Jennifer will join students from Kansas, Colorado, Oklahoma and Wyoming in Steamboat Springs, CO.

Campers will work together to form a working "candy" cooperative, learn about cooperatives and participate in other leadership building activities. They will also visit Trapper Coal Mine and Craig Generation Plant, as well as sites around Steamboat Springs.

Congratulations to Caleb and Jennifer!

Go Paperless Today!

Whether you're busy taking care of your family, or just always on the go, we know how hard it is to get everything done in 24 hours. That's why Twin Valley Electric is proud to offer online bill pay.

You have the ability to pay your bills online, view your account history and your statements with our Online Bill Pay system. Just visit our Web site at www.twinvalleyelectric.coop and click the Online Bill Pay icon. You'll be directed to our secure site. Once there you will need to create a user ID, the first time you log on. You can then view and pay your bill online. It's really that easy.

Our Online Bill Pay system is secure and designed to protect your account and payment information. Payment methods include personal check, or use your Visa or MasterCard card.

The screenshot shows the Twin Valley Electric Cooperative website. At the top, there's a navigation menu with links for Home, About Us, Energy Savings, Safety, News & Info, Member Tools, and Careers. Below the navigation, there are several promotional boxes. One box is titled "Your Energy Account" and lists options like "Access your account and view your bill online," "BillPay VISA," "Sign Up for Bill Pay," "Apply for New Service," and "About Your Bill." Another box features a photo of a woman with a dog and a child, with text for "you HOME" and "you BUSINESS" services. A third box promotes "WILD BLUE" with the text "Tired of waiting for dial-up? WildBlue may be just what you need."

Planting the Right Tree in the Right Place

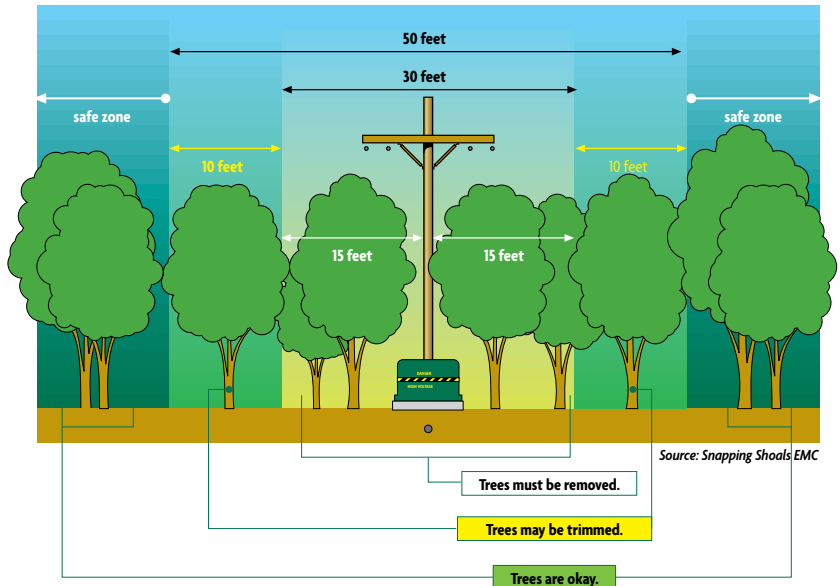
Many people plant trees during the spring, especially around National Arbor Day, occurring April 30 this year. There are many environmental and beautification benefits to planting young trees. However, Twin Valley Electric Cooperative wants to remind everyone to be aware of electrical hazards while planting this year. Always seek help from professionals when choosing and placing trees and bushes.

Trees that grow too close to electric lines can create shock and fire hazards as well as power outages. More importantly, children can become victims of electric shock when they climb trees that have grown too close to the power lines as well. Trees growing into power lines can also create electrical hazards for people who might be trimming branches, hanging lights or otherwise working around them.

Trees provide many aesthetic, environmental and economic benefits. But everyone needs to be aware of the dangers and risks created when trees grow into power lines, and the importance of calling 811 for Kansas One Call before beginning any landscaping project.

Take the time to research tree selections by consulting your local arborist, tree nursery or utility. These experts can provide assistance in designing a beautiful, shade-filled yard with trees appropriate for each area of the landscape. With their help, trees can provide economical cooling in the summer, and a wind-break for harsh winter winds.

In addition, trees help combat the effects of pollution by absorbing carbon dioxide (CO₂). When trees grow, they take energy from the sun and combine it with CO₂ from the air to photosynthesize. This makes trees a natural “carbon sink” or, a living source of carbon reduction. Some trees are better suited for this task



than others and, according to the U.S. Department of Energy (DOE), tree species that grow quickly and live long are ideal carbon sinks.

Choosing the right tree for the right place is crucial, especially when it comes to power lines. Trees and wood in general can potentially conduct electricity and can create a safety hazard if grown close to electric lines. Power outages or momentary interruptions can occur when branches come into contact with overhead lines. Electrical arcing and sparking from a wire to a nearby branch can also cause fires.

Keep in mind expected height when you purchase trees to plant this year. Just because a tree is far from the power line right now, doesn't mean it always will be. If you have trees that appear to be growing into power lines, contact Twin Valley. Never try to prune them yourself.

To avoid future electrical hazards, safe planting tips to remember include:

- ▶ **Consider mature height of trees.** Never plant a tree near a power line that could grow within 25 feet of it. Tall growing trees should be planted a minimum of 20 feet away

from power lines, and 50 feet away to avoid future pruning. A mature height of less than 15 feet is recommended for trees planted near power lines.

- ▶ **Do not plant near underground utility services.** Tree roots can grow to interfere with underground pipes, cables and wires. Future repairs to these facilities also could damage the health and beauty of nearby plants and trees, or even require removal.
- ▶ **Keep areas around electric meters, transformers or other electrical equipment free of any vegetation that could limit utility service access.**
- ▶ **Before digging,** call 811 for Kansas One Call to mark the location of underground utilities so that accidental contact, damage and injuries can be avoided.

There are many beautiful varieties of low-growing trees and shrubs that provide color, screening and shade, and enhance the quality of life in our communities and environment. Consider the types of trees that co-exist well with power lines and the environment to avoid the need for trimming for line clearance.