



**TWIN VALLEY
ELECTRIC COOPERATIVE**

NEWS

**Twin Valley Electric
Cooperative, Inc.**

Ron Holsteen General Manager

Board of Trustees

Daniel Peterson
President

Bryan Coover
Vice President

Ronald McNickle
Secretary

Larry Hubbell
Treasurer

Michael Allison
Trustee

Tom Ellison
Trustee

Bryan Hucke
Trustee

Wayne Revell
Trustee

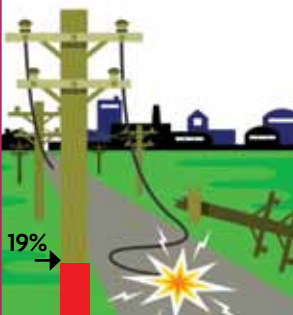
Robert Webster, Jr.
Trustee

Office Hours

Monday-Friday
8 a.m. to 4:30 p.m.

FEMA Rebuild Update

As of March 19, we have completed 19% of Federal Emergency Management Agency (FEMA) rebuild work.



FROM THE MANAGER

Join us for Your Annual Meeting

Twin Valley Electric Cooperative will hold its 63rd Annual Meeting on Thursday evening, April 15, at the Labette County High School cafeteria.

This year, we are making some changes that will hopefully increase the participation by our members in the Annual Meeting. We will serve a meal prior to the meeting. The registration tables will open at 5:30 p.m. and the meal will be served from 5:30 to 6:30 p.m. Entertainment will be provided by the LCHS Select Choir.

All members are encouraged to attend your cooperative Annual Meeting. By virtue of the fact that you purchase electricity from Twin Valley, you are a member and an owner of the cooperative. This membership affords you the privilege of participating in this meeting and voting for Directors to serve on the Board of Directors.

Prior to the business meeting you will have an opportunity to see displays from our power supplier, Kansas Electric Power Cooperative (KEPCo), and have questions answered by knowledgeable people who make the power supply

system work. You can also network with the staff and Board members.

During the business meeting, you will hear reports on the financial condition and activities of the cooperative. Part of the business meeting will be to elect three Directors for three-year terms.

The nominating committee has met and nominated candidates for election to the Board of Directors. Our Bylaws also allow for nomination by petition and for nominations from the floor at the meeting. One Director will be elected from each district.

As usual, there will be several prizes to be given away along with an early bird drawing. To be eligible for the early bird drawing, you need to return the card from the Official Notice of the Annual Meeting that you will receive in the mail approximately 10 days before the meeting.

This year, it is important for you to return the card telling us how many persons will be attending so that we can plan for the meal. I hope to see you at the Annual Meeting.



Ron Holsteen

We hope to see you at the meeting!

Mark Your Calendars!

We hope to see you at the Twin Valley Electric Annual Meeting April 15, 2010. Don't forget to RSVP using the card on page 16-B.

We hope to see you there!

April						
S	M	T	W	U	F	S
				1	2	3
4	5	6	7	8	9	10
11	12	13	14	15	16	17
18	19	20	21	22	23	24
25	26	27	28	29	30	

Plan Ahead for Outages Your Life May Depend on It



If someone in your home depends on life support, it is important to prepare for power outages.

For members who rely on life-support equipment at home, an outage could be a matter of life and death.

If someone in your home depends on an electrically-operated health aid, take these steps to prepare for power outages.

- ▶ Plug electronic devices into surge protectors and consider using uninterruptible power supplies on important devices.
- ▶ Consider investing in a portable generator that can power vital equipment in the event of an extended outage. Consult with a qualified electrician before installing the device, as improperly rigged generators can back feed electricity into electric cooperative power lines and injure or even kill electrical workers.
- ▶ Recharge cell phones frequently so you're not caught with a dead battery when the power goes out. Keep a corded land line operating in your home, as cordless phones need power and will not work without electricity.
- ▶ Let Twin Valley Electric know that someone in your home relies on electrically powered medical equipment so your home will receive priority treatment during a weather emergency.
- ▶ Report all outages quickly.
- ▶ Ask Twin Valley Electric to notify you in advance of planned outages.

Twin Valley Annual Meeting

April 15 at Labette County High School in Altamont



Join us to hear cooperative news and to socialize with other Twin Valley members.

Twin Valley Electric Cooperative's Annual Meeting is on April 15, 2010, at the Labette County High School Cafeteria in Altamont.

A free meal will be served at 5:30-6:30 p.m. and registration will open at 5:30 p.m. The business meeting will follow at 7 p.m.

The following are some of our planned activities for the evening.

- ▶ Election of Trustees
- ▶ Announcement of Youth Tour winners
- ▶ Cooperative reports
- ▶ Door Prizes



Twin Valley Manager, Ron Holsteen, addresses the membership at the 2009 Annual Meeting.

Annual Meeting Attendance and Drawing Entry

To help us plan the amount of food needed for the Annual Meeting supper, April 15, please indicate the number that will attend.

Return by: April 9, 2010

Number Attending: _____

Name: _____

Address: _____

All Attendance Forms Submitted to the Office Prior to April 9, 2010, will qualify for a Special Early Bird Drawing Winner to be announced at the annual meeting.

Must be present to win!

Nominating Committee Meeting Report

The meeting was called to order by General Manager Ronald Holsteen at 7 p.m.

The nominating committee consisted of: William Billman, Mike Fultz, Diane McCartney, Richard Houston, Mike Stine, Pam Baker, Carla Bebb and Kim Geren.

After short discussion by the committee, there was a motion by Baker, seconded by Houston to elect William Billman as Chairman.

The committee reviewed the provisions of the bylaws which state:

Any member shall be eligible to be nominated, elected and remain a Director of cooperative who:

(a) is a member and bona fide resident in the particular district, which the member is to represent;

(b) is not a present employee of the cooperative or former employee of the cooperative (except for former employees who ceased working for the cooperative at least three years prior to the date of election) or in any way financially interested in a competing enterprise or a business engaged in selling energy, energy services or energy supplies or maintaining energy producing or selling facilities. However, the Board may grant exceptions for "de minimus" competing enterprises.

(c) is not a close relative to an incumbent Director or an employee of the cooperative. The term "close relative" means the relationship of father, mother, brother, sister, son and daughter or is the spouse of such individual.

(d) was not, either prior to or while a Director convicted of a state or federal felony. Convicted shall be defined as both being convicted or entering into a diversion agreement on a felony charge. A felony expungement



The 2010 Twin Valley Nominating Committee: (from left, back row) Mike Stine, Richard Houston, Kim Geren, Bill Billman; (from left, front row) Pam Baker, Carla Bebb, Diane McCartney and Mike Fultz.

shall still be considered a conviction.

Upon establishment of the fact that a board member is holding the office in violation of any of the foregoing provisions, the board shall remove the board member from office.

Nominations made that evening by the committee were:

- ▶ **District #1**
Bryan Hucke
Jack Watkins
- ▶ **District #2**
Dan Peterson
Steve Spencer
- ▶ **District #3**
Larry "David" Hubbell

Additional members can be nominated for these positions by written petition of any 15 or more members, or by nomination from the floor at the Annual Meeting.

2010 Trustee Nominations

- ▶ **District 1**
Bryan Hucke
Jack Watkins
- ▶ **District 2**
Dan Peterson
Steve Spencer
- ▶ **District 3**
Larry "David" Hubbell



Would You Like to Become an Electric Lineworker?

Twin Valley Electric Cooperative is offering \$500 scholarship(s) to any graduating senior, high school graduate, or recipient of an equivalent degree (GED, etc.) who plans to enroll in line school.

The scholarship will be awarded to applicant(s) who are residents of one of the four counties (Labette, Montgomery, Neosho or Cherokee) served by Twin Valley Electric.

If you are interested, please call 620-784-5500 or to download an application please visit our Web site at www.twinvalleyelectric.coop.

Look Up for Power Lines and Stay Safe

Things we see every day can almost fade from view. In fact, recent studies have found that people's minds likely ignore power lines because they have seen them so often they don't even notice them any more. But failure to notice high voltage power lines can be a deadly oversight.

According to the U.S. Consumer and Product Safety Commission, hundreds of consumer deaths happen each year from direct or indirect contact with power lines. Electrocutation is also the second leading cause of death for utility and construction workers according to the National Institute of Occupational Safety and Health. With so many people heading outdoors in the spring, power line awareness is even more crucial at this time of year.

"Often when we undertake outdoor activities, we don't even think

about power lines," said Ron Holsteen, Manager of Twin Valley. "Taking a few moments to become aware of your surroundings is a critical step to keeping yourself and your loved ones safe."

Twin Valley encourages everyone to follow these guidelines as they prepare to work outdoors this year:

- ▶ Look up and around you. Always be aware of the location of power lines, particularly when using long metal tools like ladders, pool skimmers and pruning poles. Lower your long equipment when you are moving it. Carry ladders and other long items horizontally whenever possible.
- ▶ Be careful when working on or around your roof, installing rooftop antennas and satellite dishes, doing roof repair work or cleaning gutters. Never go up on the roof in bad weather.
- ▶ Be especially careful when working near power lines attached to your house. Keep equipment and yourself at least 10 feet from lines.
- ▶ Never trim trees near power lines – leave that to the professionals. Never use water or blower extensions to clean gutters near electric lines. Contact a professional maintenance contractor.
- ▶ Never climb trees near power lines. Even if the power lines aren't touching the tree, they could touch when more weight is added to the branch.
- ▶ If your projects include digging, like building a deck or planting a tree, call your local underground utility locator before you begin. Never assume the location or depth of underground utility lines. This service is free, prevents the inconvenience of having utilities interrupted, and can help you avoid serious injury.

Another instance where people often come in contact with power

lines is through vehicle crashes. In accidents that bring down power lines, our instincts tell us to flee danger. However, it's almost always best to stay in your vehicle and wait for help.

Four Indiana teenagers found themselves in this dangerous situation last February. After colliding with a power pole, a power line fell on the vehicle they were traveling in. Fortunately, some of them had just attended a power line safety demonstration at their high school.

Lee Whittaker, one of the students involved in the crash, credits their survival to timely electrical safety education. "I made sure everyone else was okay and made sure I was okay. I told them not to get out," Whittaker said. "That was the main thing he had repeated during the program, not get out of a vehicle if you're in an accident involving power lines."

If you must get out because of fire or another danger, jump clear of the vehicle without touching it and the ground at the same time. Then hop with feet together -- don't run or stride. Electricity spreads out through the ground in ripples, like a stone dropped in water. The voltage is highest in the ring closest to the vehicle and decreases with distance. Hop with feet together so that one foot won't be in a higher voltage zone than another, which could make you a conductor for electricity!

If you come upon or witness an accident involving toppled power poles and lines, don't leave your vehicle to approach the accident scene. "Often our inclination is to step in and help those in danger and offer assistance to the injured," Holsteen said. "However, in accidents involving power poles, the best thing you can do is call for help. Wait for trained assistance to arrive, or you could become an additional victim in need of rescue."



Electrocution is the second leading cause of death for utility and construction workers. With so many people heading outdoors in the spring, power line awareness is even more crucial at this time of year.