



TWIN VALLEY ELECTRIC COOPERATIVE

NEWS

Twin Valley Electric Cooperative, Inc.

Ron Holsteen General Manager

Board of Trustees

Daniel Peterson
President

Bryan Coover
Vice President

Ronald McNickle
Secretary

Larry Hubbell
Treasurer

Michael Allison
Trustee

Tom Ellison
Trustee

Bryan Huckle
Trustee

Wayne Revell
Trustee

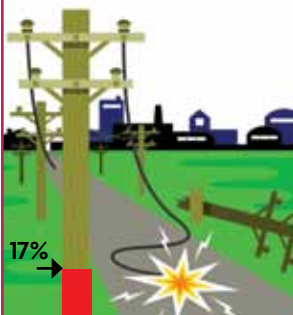
Robert Webster, Jr.
Trustee

Office Hours

Monday-Friday
8 a.m. to 4:30 p.m.

FEMA Rebuild Update

As of February 15, we have completed 17% of Federal Emergency Management Agency (FEMA) rebuild work.



From the Manager



Ron Holsteen

Last month I informed you that we had started planning for our Annual Meeting, which will be held on Thursday evening, April 15, at the Labette High School Auditorium in Altamont.

Twin Valley is governed by a Board of Directors, and each year three Directors positions become open after their three-year term has expired. Twin Valley's bylaws state that one Director shall be elected from each district each year for a term of three years as terms of office expire or until successors shall have been elected and qualified.

Those Directors whose terms are expiring this year are District 1, Bryan Huckle; District 2, Dan Peterson and District 3, David Hubbell.

The bylaws require the Board to appoint a nominating committee not less than 30 days nor more than 90 days before the Annual Meeting. The committee shall consist of not less than five nor more than thirteen members who shall be selected from different areas of the cooperative. No member of the Board may serve on this committee.

The Board has appointed the following members to the nominating committee: Mike Fultz, Diane McCartney, Caleb Phillips, Richard Houston, Mike Stine, Pam Baker, Bill Billman, Keith Tucker, Carla Bebb and

Kim Geren.

The nominating committee will meet at Twin Valley's office on Tuesday evening, March 9 at 7 p.m. The nominating committee shall prepare and post a list of nominations for directors at the office of the cooperative at least 20 days before the meeting. The Secretary shall mail a statement of the number of directors to be elected and the names and addresses of the candidates nominated by the committee at least 10 days before the date of the meeting.

Fifteen or more members acting together may make other nominations by petition. Any nominations made by petition shall be posted at the same place where the list of nominations made by the committee is posted. Nominations made by petition, which are received at least five days before the meeting, shall be included on the official ballot. Later nominations by petition shall be treated as nominations from the floor.

In addition to those persons, nominations may be made from the floor at the annual meeting. No member may nominate more than one candidate.

Any questions regarding the nominating and election process can be directed to me at 620-784-5500.

Director Terms Expiring in 2010

- ▶ Bryan Huckle, District 1
- ▶ Dan Peterson, District 2
- ▶ David Hubbell, District 3

Electrical Line Worker Scholarship Guidelines

Objective: To encourage, promote and educate electric line workers for enduring and rewarding careers.

Availability: TVEC Line Worker Scholarship(s) will be awarded this year to applicant(s) who are residents of one of the four counties (Labette, Montgomery, Neosho or Cherokee) served by TVEC and who will attend an approved line worker training program as a full time student.

- ▶ Scholarships are in the amount of \$500
- ▶ Scholarship applicants may be any person interested in a career in electric line work who have completed high school or its equivalent.

Applications Must Include:

- ▶ Completed Electrical Line Worker Scholarship application
- ▶ Education and work experience data sheet
- ▶ High school and/or college transcripts

Payment: The scholarship payment will be made directly to you upon student's enrollment in one of the approved line worker training programs. Verification of enrollment must be sent to TVEC for scholarship payment to be made.

Post-School Employment: Scholarship recipients are in no way guaranteed employment at TVEC upon completion of training. However, filing an application is always in good interest for the trained apprentice line worker.

Twin Valley Introduces an Electrical Line Worker Scholarship

Do you want an exciting career? Would you like a great salary and benefits? Then electrical line work may be for you. Linemen are the backbone of the electric utility industry.

What does an electrical line worker do?

An electrical line worker performs many different tasks in a variety of situations.

For instance, line workers may be climbing poles or operating aerial lift devices to work on overhead lines 25-200 feet above the ground, while the very next day they may be a hundred miles away erecting a substation, or digging trenches to string underground electric cable.

What kind of wages does an electric line worker earn?

Line workers earn excellent wages. After graduation from an accredited training program, an apprentice line worker can generally earn a starting wage of \$18 to \$22 per hour plus overtime. Within a few years, a journeyman line worker can earn up to \$26 to \$32 per hour, plus overtime.

A typical line worker benefit plan can include medical insurance, a pension plan, life insurance, and a retirement savings plan.

What career opportunities exist for electric line workers?

Twin Valley Electric is committed to encouraging men and women to consider career opportunities in the electric utility industry, especially in cooperatives. Careers with an electric cooperative make it possible for people to live, work and raise their families in rural America communities.

Electric lines and facilities are maintained, replaced and expanded at an ever-increasing rate. This development creates a strong need for highly trained, qualified workers. Many experienced line workers are reaching retirement age, creating a need for new apprentices who can look forward to a challenging and rewarding career with excellent advancement opportunities.

Line worker training programs fill up quickly. It's never too early to begin the application process. The Twin Valley Electric Line Worker Scholarship is designed to help qualified individuals become trained apprentice line workers.

For more information and to download an application please visit our Web site at www.twinvalleyelectric.coop.



Mark Your Calendars!

We hope to see you at the Twin Valley Electric Annual Meeting April 15, 2010.

Look for more information in the next issue of *Kansas Country Living*.

We hope to see you there!

April						
S	M	T	W	U	F	S
				1	2	3
4	5	6	7	8	9	10
11	12	13	14	15	16	17
18	19	20	21	22	23	24
25	26	27	28	29	30	

Spring Home Improvement Safety Tips

Spring is the time of year when many individuals begin work on home improvements. While making a to-do-list, keep in mind that there are many federal tax incentives to include efficiency improvements during repairs and new construction. Take precautions before starting renovations or construction projects, especially when working around electrical equipment and overhead power lines.

Efficiency and safety can go hand in hand by thinking and planning ahead. Before tackling any project, prepare for the job. Make sure you have the right tools and materials and take note of any potential hazards in the work area such as overhead power lines or outdoor outlets that lack ground fault protection (GFCIs).

Simple actions like replacing standard light bulbs with compact florescent bulbs (CFLs) and sealing air leaks with weather stripping or caulk can produce substantial savings on your energy bill. You can also receive tax incentives for improvements such as replacing old windows with higher efficiency ones.

Be willing to hire a licensed professional for projects that involve electrical wiring, or when working close to electrical equipment. Some work, like trimming trees near power lines and upgrading outdated electrical systems, is best left to professionals.

Safety tips to keep in mind:

- ▶ **Make sure you have the right tools and equipment for the job.** Use only extension cords that are rated for outdoor use when working outside. Keep your work area tidy and don't allow your power cords to tangle. Make sure outlets have ground fault protection. Use a portable ground fault circuit interrupter (GFCI) cord if your outdoor outlets don't have GFCIs.
- ▶ **Look up and around you. Be sure to lower equipment when you are moving it.** Carry ladders and other long items horizontally whenever possible. Remember, aluminum ladders, as well as wooden ladders, can conduct electricity. Fiberglass provides better protection against electric shock.

- ▶ **Be especially careful when working near power lines attached to your house.** Keep equipment and yourself at least 10 feet from lines. Never trim trees near power lines—leave that to the professionals. Never use water or blower extensions to clean gutters near electric lines. Contact a professional maintenance contractor.

- ▶ **Use heavy-duty, three-prong extension cords for tools with three-prong plugs.** Never remove or bend back the third prong on extension cords. It is a safety feature designed to reduce the risk of electrocution or shock.

- ▶ **If your projects include digging, like building a deck or planting a tree, call One-Call for underground utility location before you begin.** Never assume the location or depth of underground utility lines. This service is free, prevents the inconvenience of having utilities interrupted, and can help you avoid serious injury.

- ▶ **If it's raining or the ground is wet, don't use electric power yard tools.** Never use electrical appliances or touch circuit breakers or fuses when you're wet or standing in water. Keep electric equipment at least 10 feet from wet areas.

Make certain home electrical systems and wiring is adequate to support increased electric demands of new electric appliances, home additions or remodeling projects. Home electrical systems age and deteriorate over time which means they're less efficient and costly than newer means available today. Replace worn and outdated wiring, and add enough outlets for appliances and electronics. Hire a licensed professional to perform an electrical inspection and do any recommended electrical work or upgrades. Do-it-yourself projects are a great way to save money, but where electricity is concerned it's always best to consult a professional.

For more information on electrical safety, please visit www.SafeElectricity.org. For information on federal tax incentives in 2010, visit www.energy.gov/taxbreaks.

Youth Tour Applications Due March 10

Twin Valley Electric Cooperative, Inc., will send one high school junior to the "Government in Action" Youth Tour in Washington, D.C., and one to the Cooperative Youth Leadership Camp in Steamboat Springs, CO.

Applicants must complete an application and return it to the cooperative office by March 10, 2010. Finalists will be quizzed and interviewed by a panel of judges at the cooperative offices on March 26, 2010.

For more information contact Jennifer at 866-784-5500.

Food 4 Kids Program

Over the past 10 years, the Kansas Food Bank's outreach to kids has expanded to meet the needs of school children who are not getting sufficient food outside of school on a regular basis.


The Food Bank provides food and supplies to Food 4 Kids schools in Kansas, which are operated in partnership with community schools. These project sites currently provide food, education and enrichment activities, and a safe haven for needy Kansas children.

If you would like to help our local children receive the food needed please sign up for the program. We have a couple options for you.

- ▶ Twin Valley gives the option to round up your bill to the nearest dollar.
- ▶ You can donate specific dollar amount that you would like to be added to your bill monthly.
- ▶ Make a one-time contribution.

To sign up for this you can choose the appropriate box on your electric statement or call the office toll free at 866-784-5500.

The Kansas Food Bank is an independent nonprofit member of America's Second Harvest since 1985. It provides food for the needy in 86 Kansas counties—that's more than 32,000 Kansans every week.



Would You Like to Become an Electric Lineworker?

Download Your Application Today at www.twinvalleyelectric.coop

Twin Valley Electric Cooperative is offering \$500 scholarship(s) to any graduating senior, high school graduate, or recipient of an equivalent degree (GED, etc.) that plans to enroll in line school.

The scholarship will be awarded to applicant(s) who are residents of one of the four counties (Labette, Montgomery, Neosho or Cherokee) served by Twin Valley Electric.

If you are interested, please call 620-784-5500 or to download an application please visit our Web site at www.twinvalleyelectric.coop.